

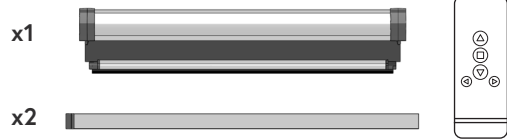
# ENGLISH

Tools needed



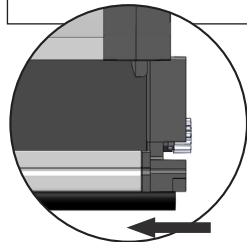
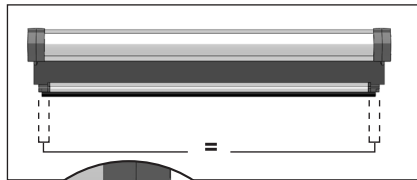
Contents of package

x1



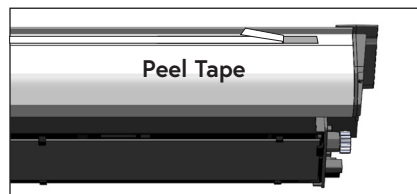
**a** x4 2 people are recommended to fit blind on larger windows

## 1 Centralise Handle

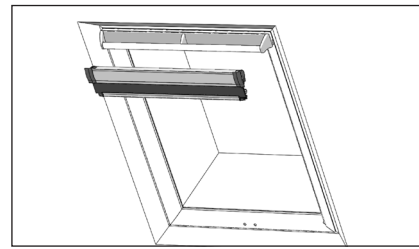


To centralise, gently slide the handle until fabric is even on both sides.

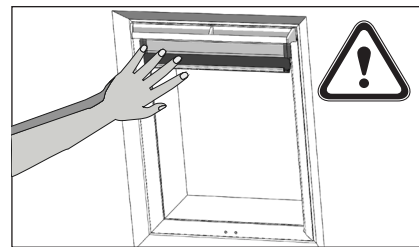
## 2 Fit Cassette to Top of Window Frame



Remove the protective backing off the adhesive tape.

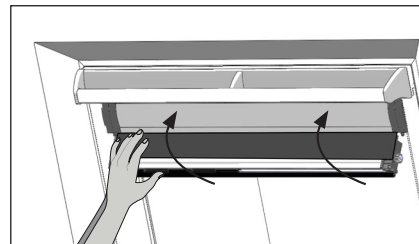


Position the cassette at top of the window frame and press firmly.

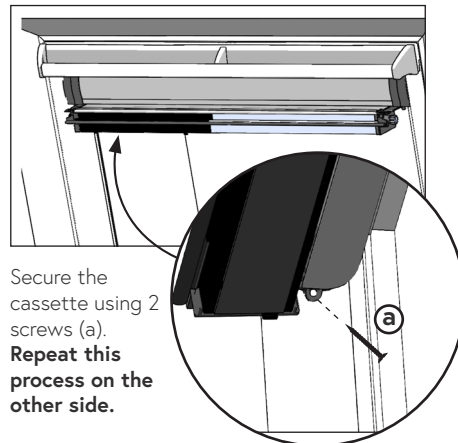


Hold the cassette until STEP 3 is complete.

## 3 Secure Cassette

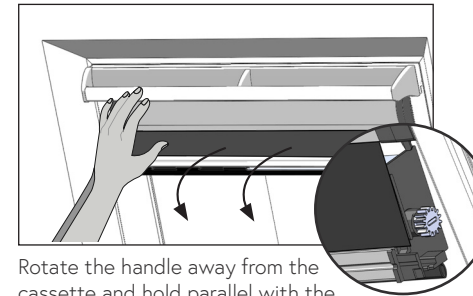


Pull handle away from the window and fold upwards against the front of the cassette.

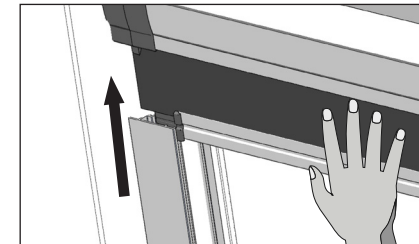


Secure the cassette using 2 screws (a). Repeat this process on the other side.

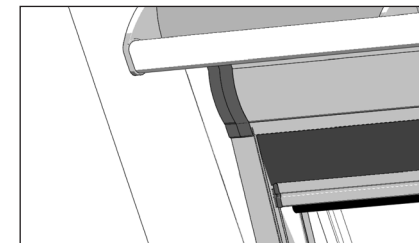
## 4 Fit Siderails



Rotate the handle away from the cassette and hold parallel with the window.

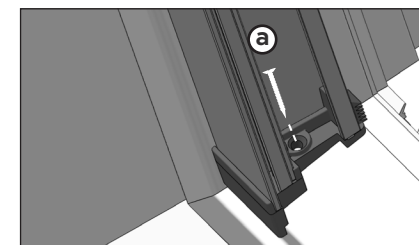


Slide fabric into the front channel of the siderail. Push siderail upwards.



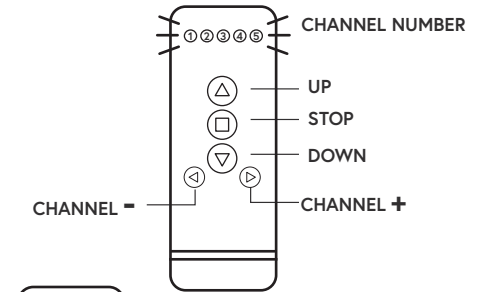
The siderail should be positioned underneath the front edge of the cassette.

## 5 Secure Siderails



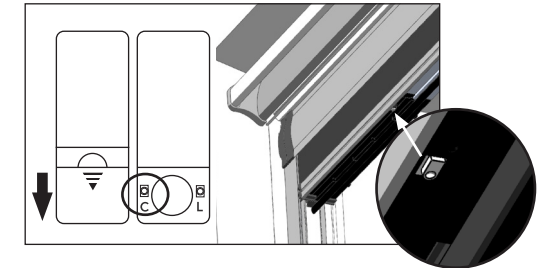
Position the siderail against the window frame and secure using screw (a) ensuring not to over tighten. Repeat this process on the other side.

## Remote Control



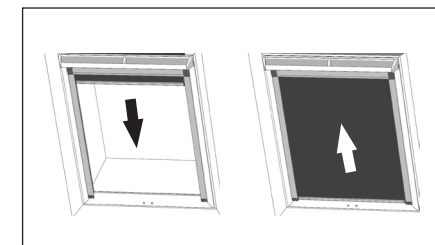
Use CHANNEL+ button to choose your preferred channel. Channel Number will flash once when selected. All paired blinds will operate together when ALL CHANNEL numbers flash.

## Pairing the Remote



1. Select your preferred Channel on the remote.
2. Remove the back cover of the remote.
3. Hold the button on the bottom of the blind for 3 seconds until the blind jogs and beeps.
4. Hold the C button on the back of the remote until the blind jogs and beeps.
5. Blind is now paired with remote.

## Operating the Blind



Press DOWN on the remote, the blind will stop automatically at the bottom of the window. Press UP on the remote, the blind will stop automatically at the top of the window.