

# SkyFit™ Fitting instructions

## for battery operated & RTS motors

### What comes in the box

- Headbox with Blind
- 2 Side Channels
- Remote
- 2 top fix brackets
- Charger & Charging Cable for battery operated blinds only



## IMPORTANT

- This skylight blind should be fitted by 2 people.
- The installation instructions in this guide should be followed otherwise the warranty will be void.
- **Do not power the blind until the instructions tell you to.**
- It is the installers responsibility to ensure safety is always maintained. A full risk assessment must be carried out prior to installation.
- It is the installers responsibility to ensure suitable fixings are used to secure the blind in place.
- It is the duty of the installer to pass on user and maintenance instructions to the end user if the installer is not the end user. The installer must also demonstrate the blind is fully working in their handover to the end user.
- **If you are unsure of any element of the install, please contact us before proceeding.**
- **All components should be checked for damage. Damaged components should be reported to us prior to the installation beginning.**

## Note



The white frame (left) is acting as the reveal of the skylight for this tutorial - Please follow all steps carefully.



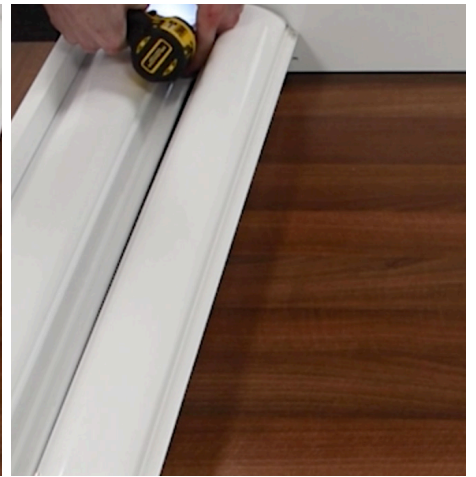
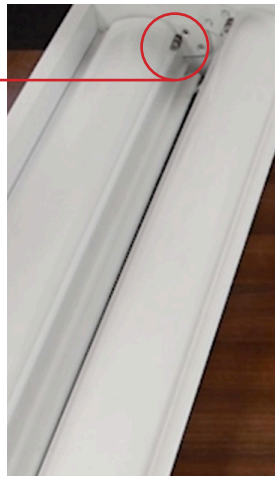
## Part 1 - Initial fitting

### Step 1

#### Installing headbox

Attach the headboxes with 2 screws to **each** side. Start with the end containing the blind.

The blind mechanism (curved fascia shown in image) should be facing towards the skylight, leaving a flat finish at the bottom.



### Step 2

Drag the blind open to the other end of the reveal. Fix with 2 screws to each side.

The fabric should come with it as you drag it across. Once both ends are firmly secured - move to step 3



# Part 2 - Activating and pairing remote

## Step 3

Follow these steps to pair with remote. **Only activate and connect one motor / blind at a time.** The activation process is different for mains powered and battery powered blinds.

Depending which motor you chose on your order form, see the following instructions.

See 3A for **Somfy® Sonesse 28 Wirefree RTS Battery Powered Motor**

See 3B for **Somfy® Altus 50 RTS Mains Powered Motor**

See 3C for **Somfy® LT50 WT Mains Powered Motor**

### 3A RTS Battery Powered

**Use if you chose OPTION 1: Somfy® Sonesse 28 Wirefree RTS Battery Powered Motor on your order form.**

- RTS Technology (Radio Technology)
  - Battery operated motor - no electrician needed
    - Built-in rechargeable lithium-ion battery
- Somfy® Remote control or Battery operated SMOOVE wall switch
  - Comes with a charger (needs topping up every 3-6 months)
    - Smooth motion with adjustable speed control
  - Compatible with Situo® Variation for precise tilt control

Blind comes with 30% charge from the manufacturer. You can charge the battery before or after fitting when the blind is in situ. To reach full charge it could take up to 8 hours. If you are charging the blind in situ you will have to use your own extension lead.



Remove the cover plate screw and carefully take off the cover plate.

Press and hold the reset button (using a pin) till the blind shunts (moves) a couple of times. The motor is now activated and the blind is ready for pairing.

Proceed to step 4.

# Part 2 - Activating and pairing remote cont'd

## 3B RTS Hardwired

**Use if you chose OPTION 2: Somfy® Altus 50 RTS Mains Powered Motor on your order form.**

- RTS Technology (Radio Technology)
- Mains powered (needs a switched fused spur fitting by an electrician)
  - Motor comes with 3-core cable (length 2.5m)
- Amazon Alexa or Google Home (requires a Hub at additional cost)
- Somfy® Remote control or Battery operated SMOOVE wall switch
  - 240v motor

Connect the blind to the mains -

The blind motor is activated automatically once it has power.

Blind is ready to be paired with the remote.

Only activate one blind at a time - disconnect all other blinds from power to avoid interference. e.g. if you have 2 or more blinds.

Proceed to step 4.

# Part 2 - Activating and pairing remote cont'd

## 3C WT Hardwired



Use if you chose **OPTION 3: Somfy® LT50 WT Mains Powered Motor**

- WT Technology (wired technology)
- Mains powered (needs a switched fused spur fitting by an electrician)
  - Comes with a white 4-core cable (length 3m)
- Somfy® Wall Switch Operated (latching rocker switch)
  - 240v motor

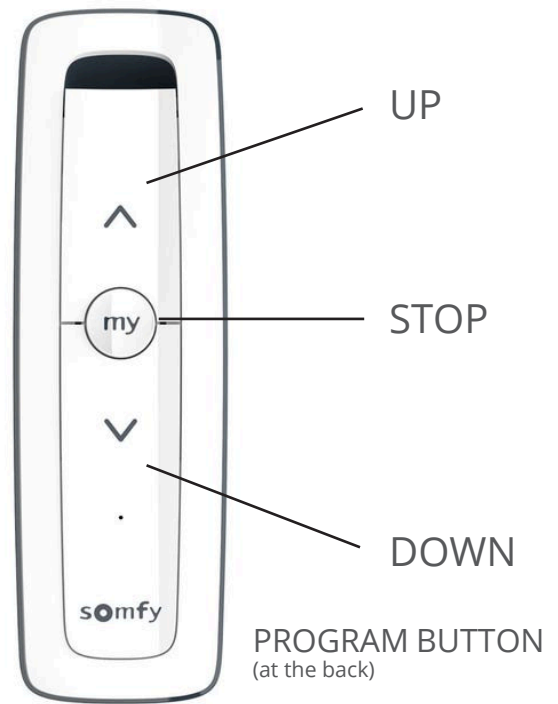
To Be Added.

## Step 4

### Pairing with remote

Press and hold the   buttons together on the remote until the blind shuts.


Pairing complete.





## Part 3 - Setting blind limits

### Step 5

Setting open and close limits.

Manually move the blind to the desired close limit using the  button.

Once the blind is in the desired position - press the   buttons together and the blind will open automatically.

Close limit set.



## Step 6

Stop the blind near the open limit using the **MY** button.

Manually adjust the blind to the desired open limit using the **▼** button.

Once the blind is in the desired position - press the **▲ MY** buttons together and the blind will open automatically.

Open limit set.



## Step 7

Saving the settings.

Stop the blind halfway using the **MY** button.

Confirm the limits by pressing and holding the **MY** button till the blind shuts.



## Step 8

\*\*\* IMPORTANT\*\*\*

Save the settings by briefly pressing the program button at the back with a pin.

The blind will shunt to confirm.

(!) This needs to be done correctly for the blind to work.



## Part 4 - Completing fitting

### Step 9

Adding side channels.

With the blind open.

Gently pull the tape and slide in the side channel. Ensure the tape slots in comfortably between the side channel.

Repeat process on the other side.



### Step 10

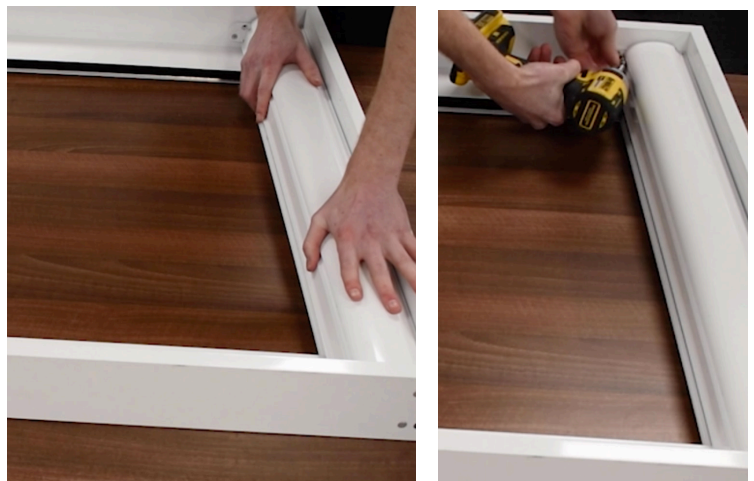
Fix the side channels to the reveal using suitable fixings as shown in the images.



### Step 11

Carefully put the cover plate back on and secure it with screws.

Installation Complete.





# Installation Complete



For any questions or queries email us:  
[team@skylight-blinds-direct.co.uk](mailto:team@skylight-blinds-direct.co.uk)