

TUYA plug programming guide

**ALEXA, OPEN
THE BLIND**



Connecting the Tuya Wifi bridge

CONNECTING THE WIFI BRIDGE

TERMS USED

JOG - the motor will move the blind forward and back one time.

SETUP BUTTON - Depending on the product and the power type, there will be a button which is used to enter the motor into programming mode.

SETUP BUTTON LOCATION

HONEYCOMB OPENVIEW MAINS_ - There is a small hole located in the centre of the motor.

For Mains Powered Motors



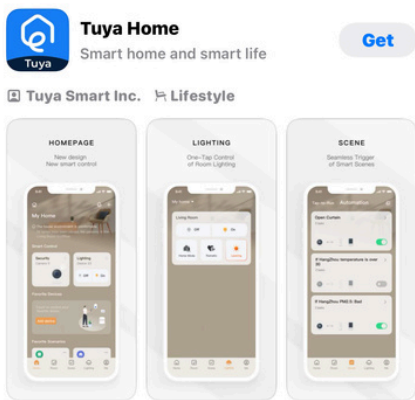
We recommend you pair the blinds before installation, as it's fiddly to find the small hole in the motor once the blinds are installed.

Connecting the Tuya Wifi bridge **For Battery Solar-Powered Motors**

HONEYCOMB OPENVIEW BATTERY_ - There is a small hole located on the battery pack near the exit cable of the battery pack.



We recommend you pair the blinds before installation, as it's fiddly to find the small hole in the motor once the blinds are installed.



Connecting the Tuya Wifi bridge

1. Download the TUYA Smart App, and make sure you are logged into your wifi system before starting.
2. Pair the blind to the wifi bridge
 1. Press the [SETUP BUTTON] once. The blind will JOG one time, and is ready to receive a code from the wifi bridge.
 3. Press the [CODE] button on the wifi bridge. The blind will JOG one time, and the light on the front of the wifi bridge will flash blue indicating that it is open to connect with the TUYA app.
 4. Go to the TUYA app and search for the device. It should automatically find the device and add the relevant interface.

RESET button Pressing and holding the reset button will open the bridge up to be received by the Tuya app.

If the motor has already previously been paired to the wifi bridge, you do not have to re-pair it. The motor will remember the wifi bridge, and attempting to re-pair will actually remove the pairing between the devices.

Brief introduction of WiFi to Radio Transfer Device (Take A12 WiFi to Radio transfer device-Tuya as an example)

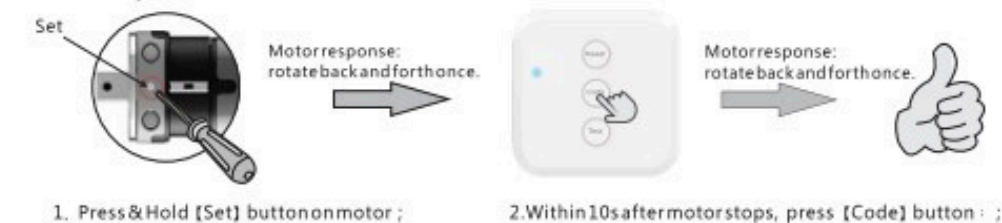


The configuration process is divided into two major steps

Step one

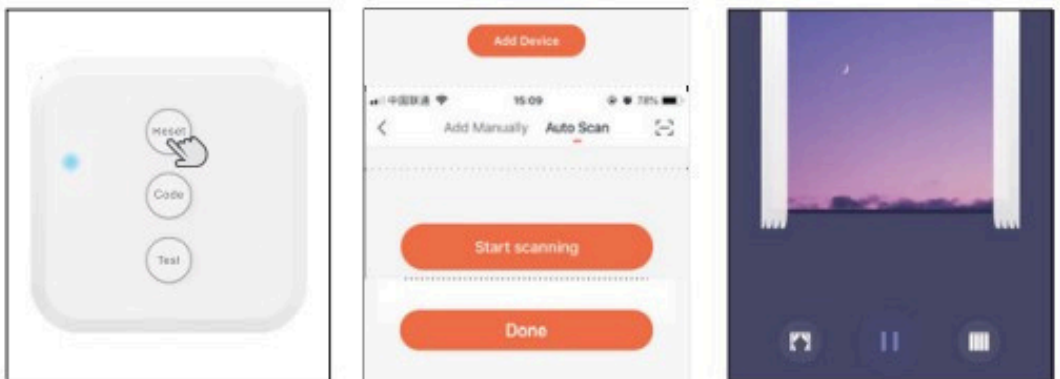
Radio code pairing: Take K35 tubular motor as an example, pair code before configure network.

Code pairing: Repeat the code pairing step to eliminate the current code. One motor can store up to 5 channels, adding a new channel will only cover the first channel.



Step two

WiFi configuration method one (direct connection)



1. Power on, press and hold the setting button for 5 seconds, the indicator light flashes continuously and releases, and now can start network configuration.

2. Click "Add Device", select Auto Scan, the indicator light will go out after successful connection.

3. The final operation interface is shown in the figure above.

Long press the setting button for 5 seconds, the indicator light flashes continuously and releases. Network cleaned.

Configure Network QR Code

Reasons for network configuration failure

1. Confirm whether the mobile phone Bluetooth is turned on
2. Confirm whether the router supports 2.4G network
3. Confirm whether the router assigns IP addresses freely

The method of confirming radio code pairing successfully



Press the [Test] test key; the motor rotates forward, and press it again, the motor reverses.

Voice service has been activated



If you have multiple blinds please note that you will need one wifi plug per blind - for individual operation

If you have multiple blinds you can use one wifi plug for multiple blinds - but they will work as one

1 - Connect the Tuya Hub to wifi following the steps in the instructions.

2 - Pair the blinds one by one following the instructions (i.e. push the small button on the motor and then the code button on the Tuya Hub. Do this for each blind, in turn).

We recommend you pair the blinds before installation, as it's fiddly to find the small hole in the motor once the blinds are installed.