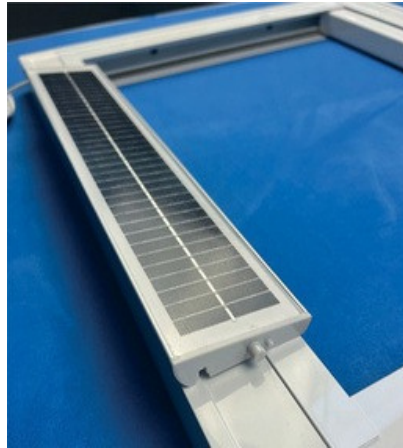


Electrics-Battery solar powered option



charging port

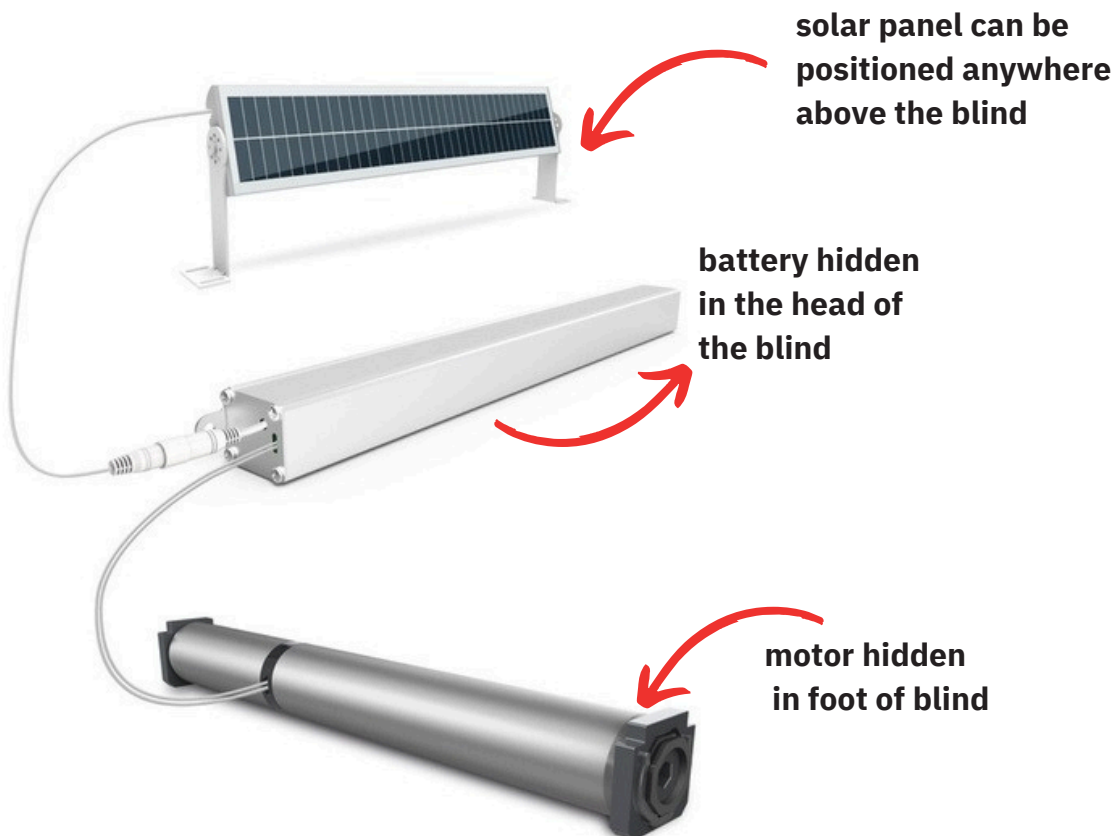


Foot Of Blind
(where motor is
situated)



The battery is hidden in the **head** of the blind. It comes pre charged. It is trickle charged by a solar panel which you sit on the top of the blind. Every now and then you should attach the blind to the charger provided to give the blind a charge. The charging port is discrete and on the underside of the blind. There is another charging port above the blind for the solar panel.

The solar panel cable is approx 2.5mts long, so you could locate the solar panel in almost any position, however, it's quite wise to locate it in a position where it will collect the most light.



Our blinds come with the NOVO motor as standard and Somfy motor if requested. These instructions are geared towards the novo motor but the Somfy motor works on the same principles and should be similar to set up

Electrics-Battery Powered Option

24mm DC Motor For Honey Comb Skylight

Electric limit + in-built receiver, Soft start and Soft stop, constant speed synchronization

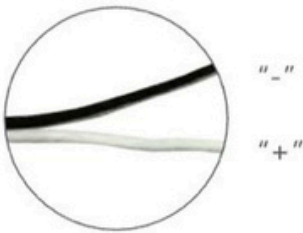
Automatic Limit + Silent with High horsepower

No need set limit / Extended sleeve/ stop by resistance



Interpretation of item

- E 24 - EL - DA - 1.5 Venetian blind motor
- 1.5 : Torsion 1.5N.m
 - DA : Double shaft
 - EL : electronic limit + receiver
 - 24 : Diameter 24mm Blinds motors
 - E : Venetian blind motor



Item NO.	Item	Working voltage (v)	Rated torque (N.m)	Rated speed (rpm)	Noise index (db)	power (W)	Control method	Length (mm)
D50630	E24-EL-DA-1.5 Skylight venetian motor R	DC24	1.5	30/45	≤45	19	RF	234

Electrics-Mains Powered Option

Transformer



Head Of Blind



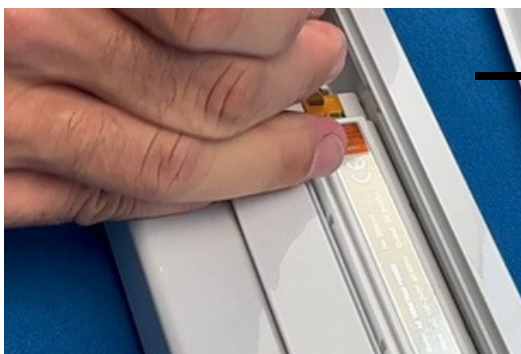
Foot Of Blind
(where motor is
situated)



The mains transformer is hidden away in the head box at the fabric end of the blind. After the initial assembly, leave the cover off, or simply remove it if it's already fitted. To remove it, we suggest a flat blunt tool Cable Exit Position such as a filler knife rather than a screwdriver. Be sure not to bend the cover when removing it. It just needs some agitation rather than brute force to remove it. Use a flat head screwdriver to push the yellow terminal springs in the direction shown. This will open the cable hole giving you enough space to push your power cable into the port. Release the terminal springs to lock the cable in place. Fit the cover strip profile into place when done.

Your AC 240v cable goes into the INPUT side of the transformer. The + terminal is LIVE The - terminal is NEUTRAL
A 0.75mm twin-core flex cable is more than adequate for the installation. The transformer is 'double insulated', it doesn't have an earth connection.

Scan for assembly instructions
or click here



Our blinds come with the NOVO motor as standard and Somfy motor if requested. These instructions are geared towards the novo motor but the Somfy motor works on the same principles and should be similar to set up

24mm DC Motor For Honey Comb Skylight

Electric limit + in-built receiver, Soft start and Soft stop, constant speed synchronization

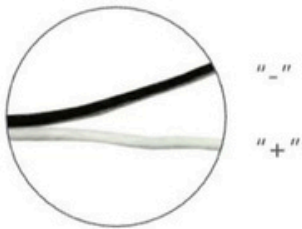
Automatic Limit + Silent with High horsepower

No need set limit / Extended sleeve/ stop by resistance



Interpretation of item

- E 24 - EL - DA - 1.5 Venetian blind motor
- 1.5 : Torsion 1.5N.m
- DA : Double shaft
- EL : electronic limit + receiver
- 24 : Diameter 24mm Blinds motors
- E : Venetian blind motor



Item NO.	Item	Working voltage (v)	Rated torque (N.m)	Rated speed (rpm)	Noise index (db)	power (W)	Control method	Length (mm)
D50630	E24-EL-DA-1.5 Skylight venetian motor R	DC24	1.5	30/45	≤45	19	RF	234

Handsets

Remote Control

Connect upto 6 blinds with this handset



Switch

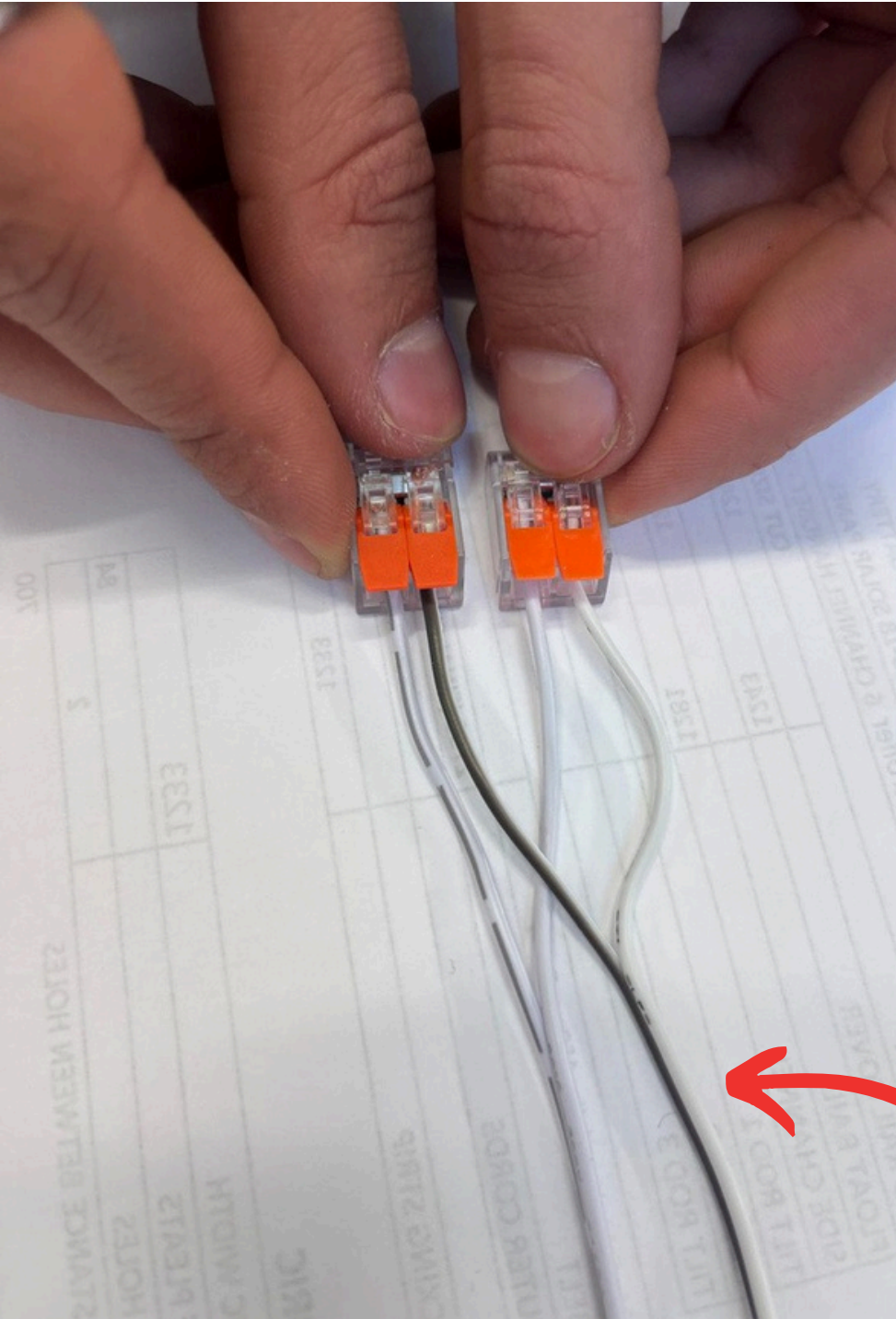
This single channel switch is a remote transmitter and doesn't need cables. Simply screw it to the wall. Only compatible with the mains powered motor.



Our blinds come with the NOVO motor as standard and Somfy motor if requested. These instructions are geared towards the novo motor but the Somfy motor works on the same principles and should be similar to set up

Electrics-Battery solar powered option

How to attach the wires for the battery operated blind



Black to Black
White to White

Black to Black
White to White

